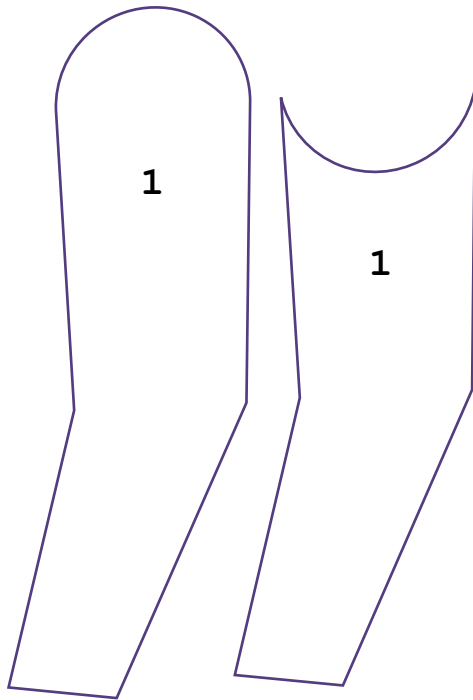


Lesson 32: Sleeve Theory

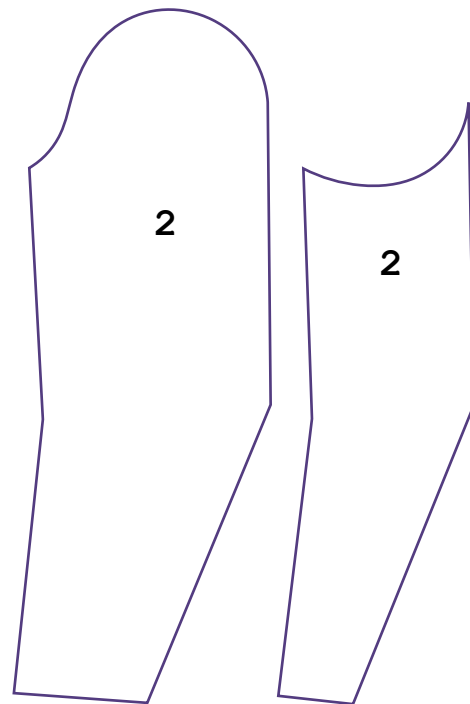
Exercise 2: Rotation of bent arm through seam placement

Note: The sleeve shapes below are simplified to explain the position of their seams. They do not represent the sophisticated lines of an actual sleeve pattern.

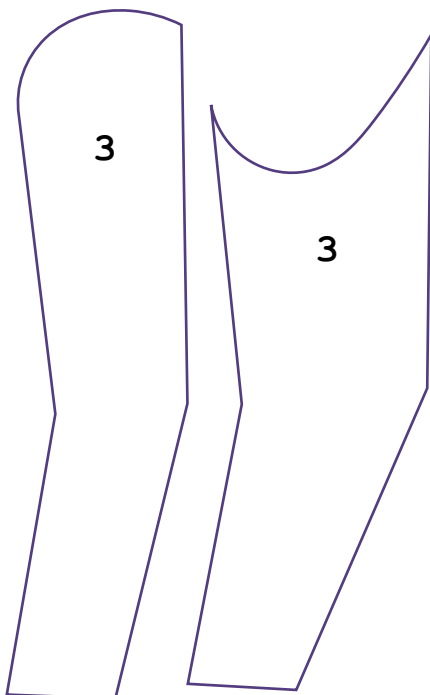
1. 50-50 Sleeve



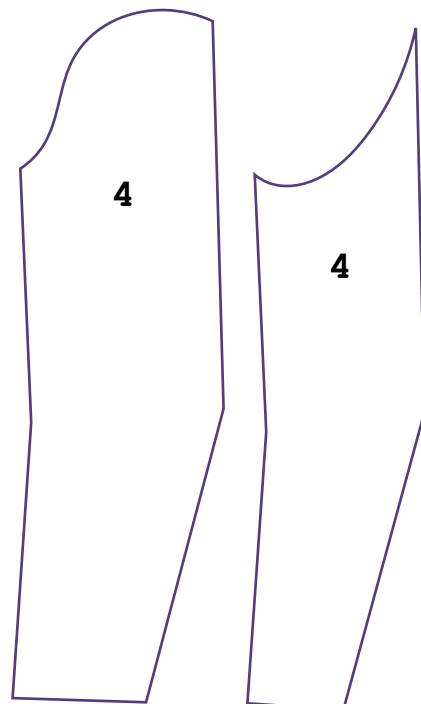
2. Sleeve with the fore-arm seam displaced inwards



3. Sleeve with the hind-arm seam displaced outwards



4. Sleeve with fore-arm seam displaced inwards and hind-arm seam displaced outwards



Lesson 32: Sleeve Theory

Exercise 2: Rotation of bent arm through seam placement

