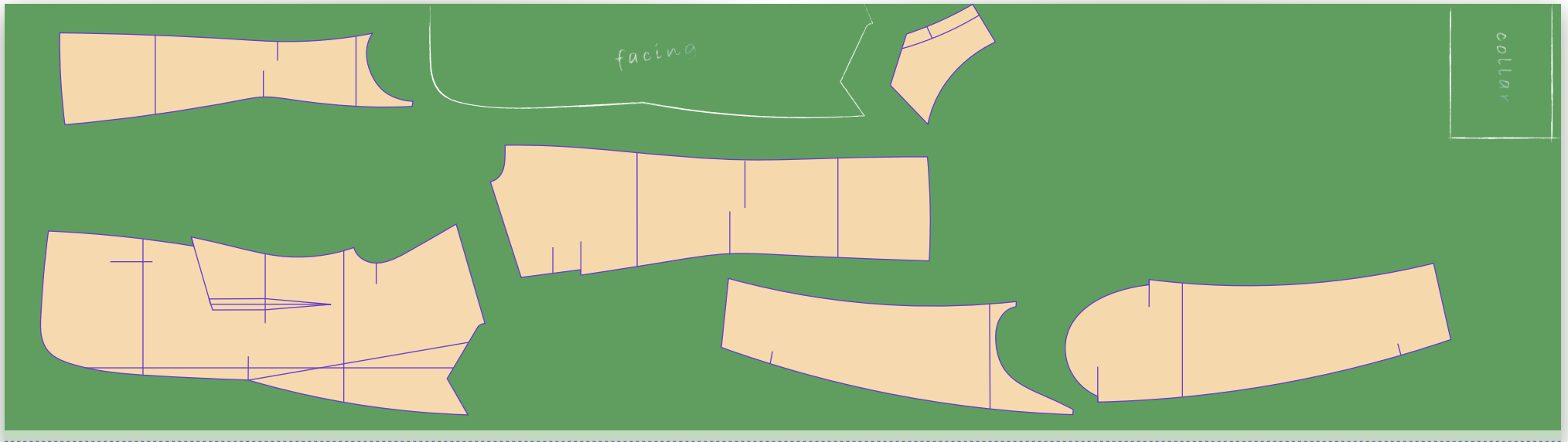


Lesson 9: Striking Out

Lay plan for the Pagoda Model

Fabric Fold

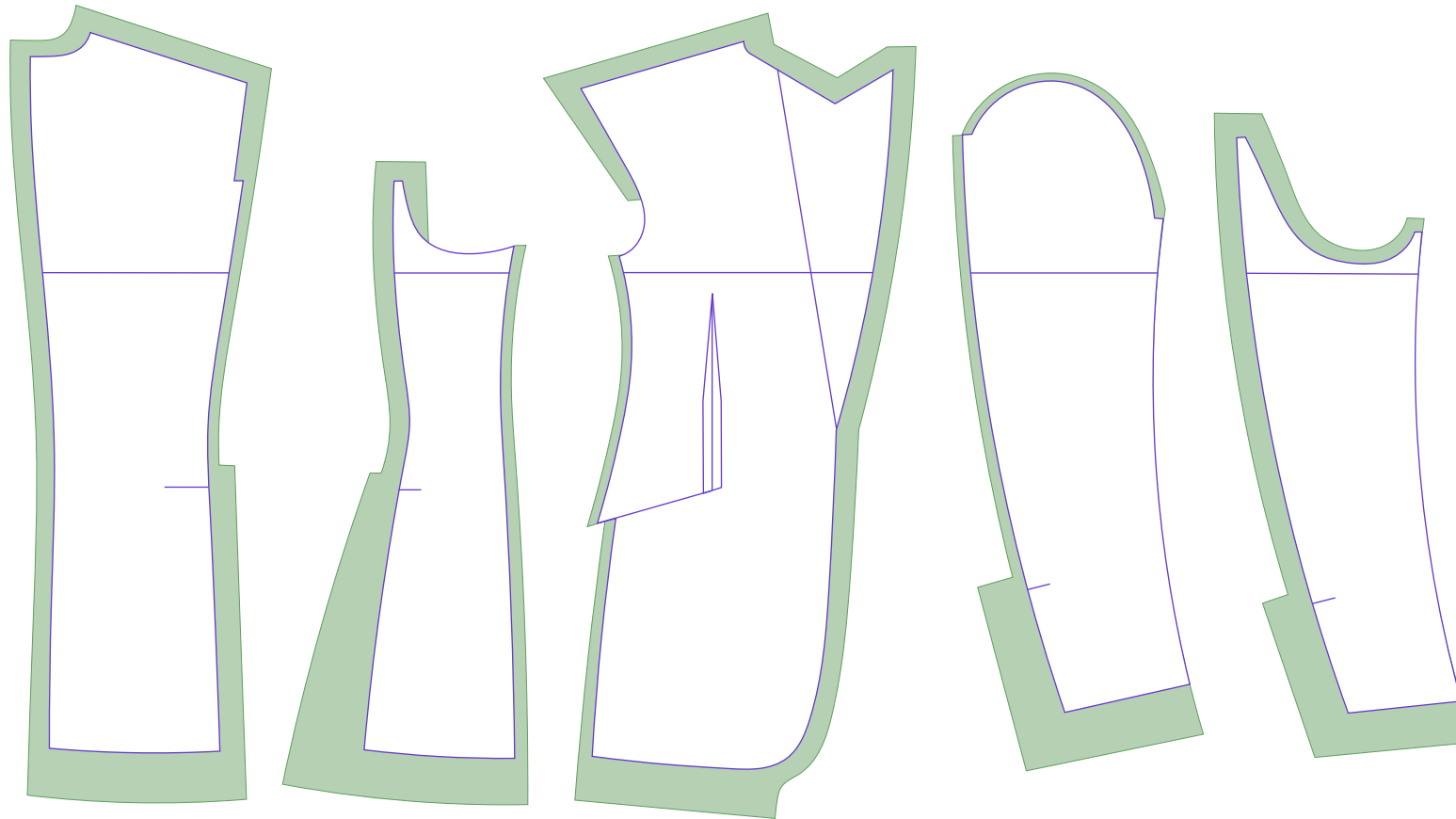


Fabric Selvedge

Note: The above diagram serves as a reminder of the lay demonstrated in lesson 9 and is not a literal representation of reality. The proportions between the fabric and patterns may differ. For the exact instructions of your Pagoda Model, please refer to [lesson 9 on YouTube](#).

Lesson 9: Striking Out

Inlay markings for the Pagoda Model



Note: The above diagram serves as a reminder of all the seams that require inlay and is not a literal representation of reality. For the exact instructions of your Pagoda Model, please refer to [lesson 9 on YouTube](#).